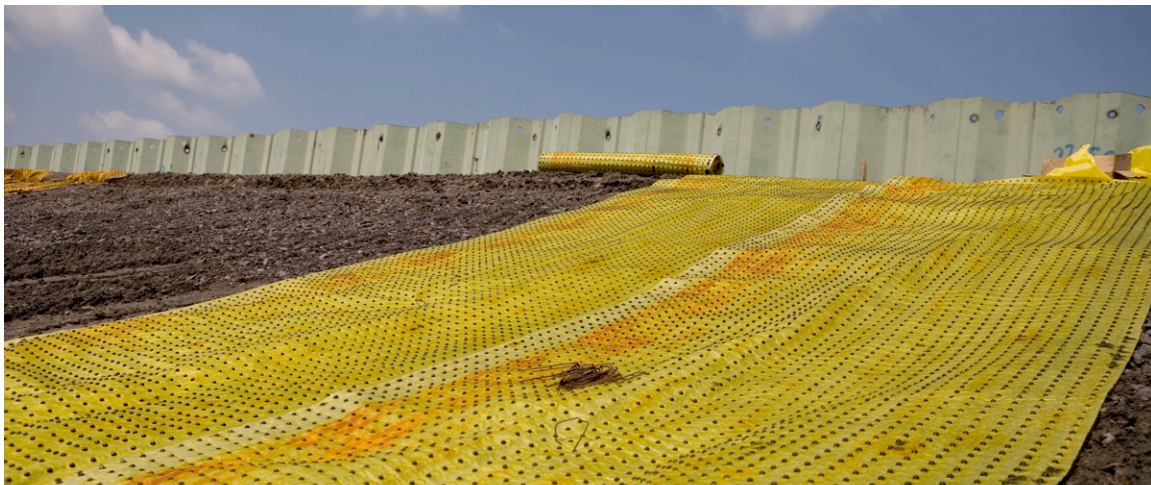


## **Biobarrier® Root Control System Helps Protect Levees and Earth Dams from Tree Roots**

Recently, the U. S. Army Corps of Engineers announced that more than 145 levees across the United States had deficient conditions. One deficiency leading to an unacceptable rating is tree growth because roots can grow into and cause weakness in the structure. A solution that allows for tree growth without tree root intrusion is Biobarrier® Root Control System.



“The Biobarrier System has been used in dams and levees to help prevent roots from damaging the structure,” says Roger Bergh, Biobarrier Senior Sales Manager, “and it’s proven to be very effective. In fact, it’s guaranteed for 15 years.”

The Biobarrier System is a geotextile fabric that follows the contours of the ground, making it easy to install. For levees, it is placed over any structures and covered with dirt; because it’s porous to water, it doesn’t disturb soil hydrology. The geotextile was designed to slowly release trifluralin, a proven herbicide that works by creating a vapor zone where roots will not grow. Trees concentrate growth in branch roots away from the trifluralin zone and any roots reaching the zone begin to grow away from it.

“With Biobarrier Root Control System, you can have trees, shrubs and other plant life so the area can look natural and attractive,” Bergh points out.